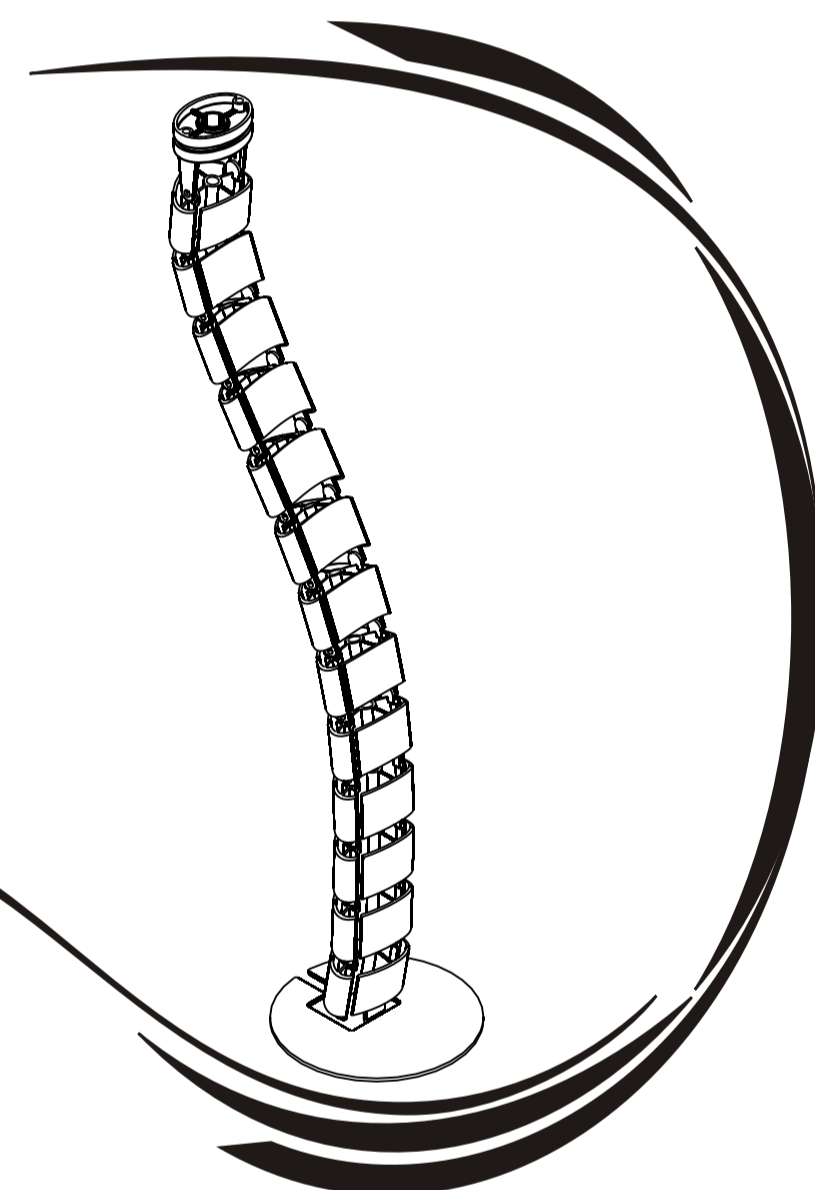




Cable Manager

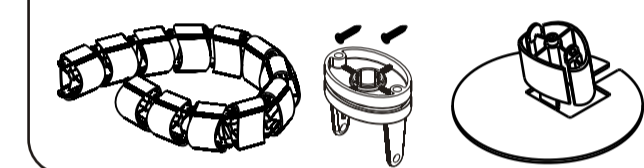
- ☐ ABL-ROSP-BL
- ☐ ABL-ROSP-GR
- ☐ ABL-ROSP-OP



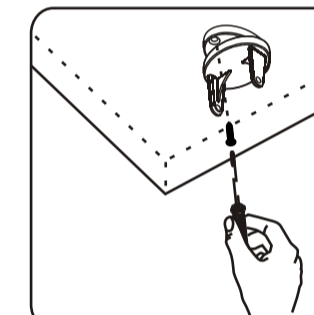
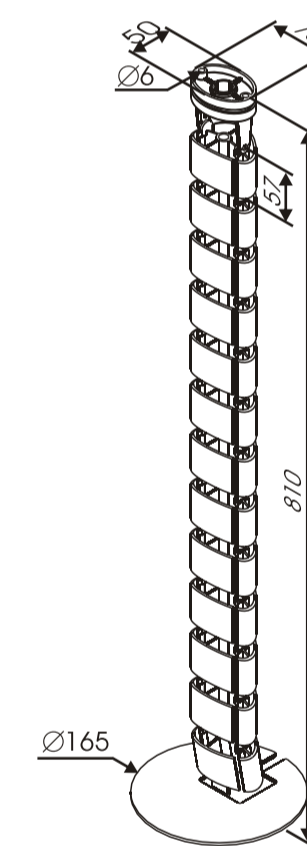
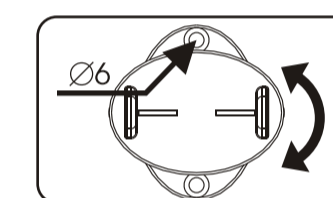
User's Guide

Do not discard any of the packaging until you have checked all the parts and the package of fittings. If you are missing any of the parts, please contact Freephone 0800 082 1444 and our staff will do their best to help you.

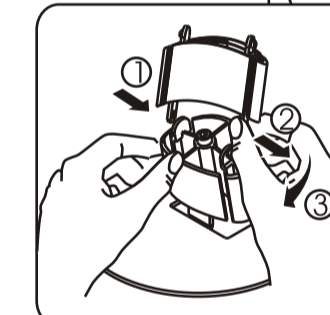
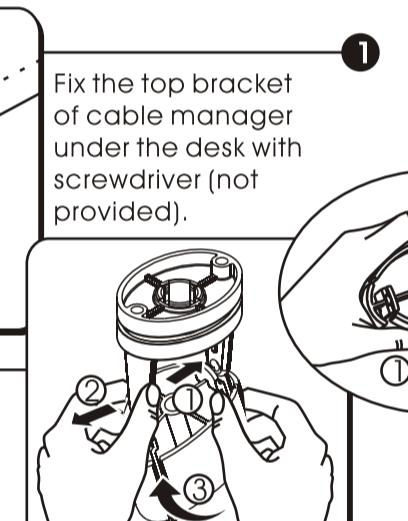
Check-List



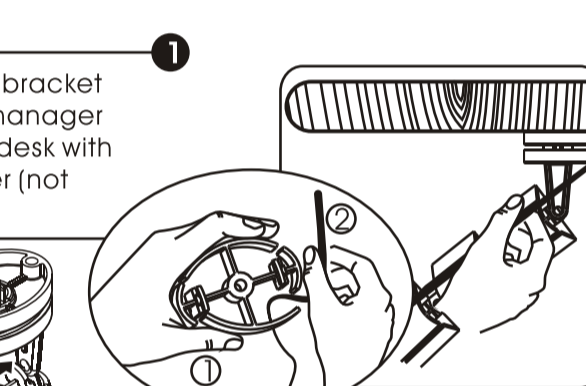
Step



2 Assemble the cable manager and top fixing bracket.

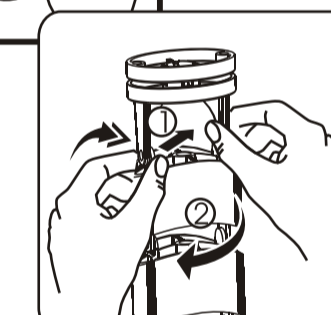


3 Assemble the cable manager and bottom weighted base.



1 Fix the top bracket of cable manager under the desk with screwdriver (not provided).

4 Route cables from desk to floor.



5 Easy disassembling when required.